



HOW CAN YOU CONTRIBUTE?



- *Welcome to the Philpott Lake Reallocation Feasibility Study Public Scoping Session*
- *<https://www.facebook.com/usace.wilmington>*
- Submit questions via the chat function in FACEBOOK Livestream (must have a FACEBOOK account)
- Questions can also be submitted:
 - By Email: philpott-reallocation-feasibility-study@usace.army.mil
using the subject line “Philpott Reallocation Study – Scoping Comment”

- By mail:

U.S. Army Corps of Engineers, Wilmington District
c/o: Philpott Reallocation Project, ATTN: CESAW-PM-DJ
69 Darlington Ave
Wilmington, N.C. 28403

PHILPOTT LAKE REALLOCATION FEASIBILITY STUDY

PUBLIC SCOPING SESSION

April 15, 2021



US Army Corps
of Engineers®





AGENDA

- Why are we here today?
- What and where are we studying?
- How are we conducting the study?
- How can we address the request?
- What is the study schedule?
- How can you contribute?





WHY ARE WE HERE?



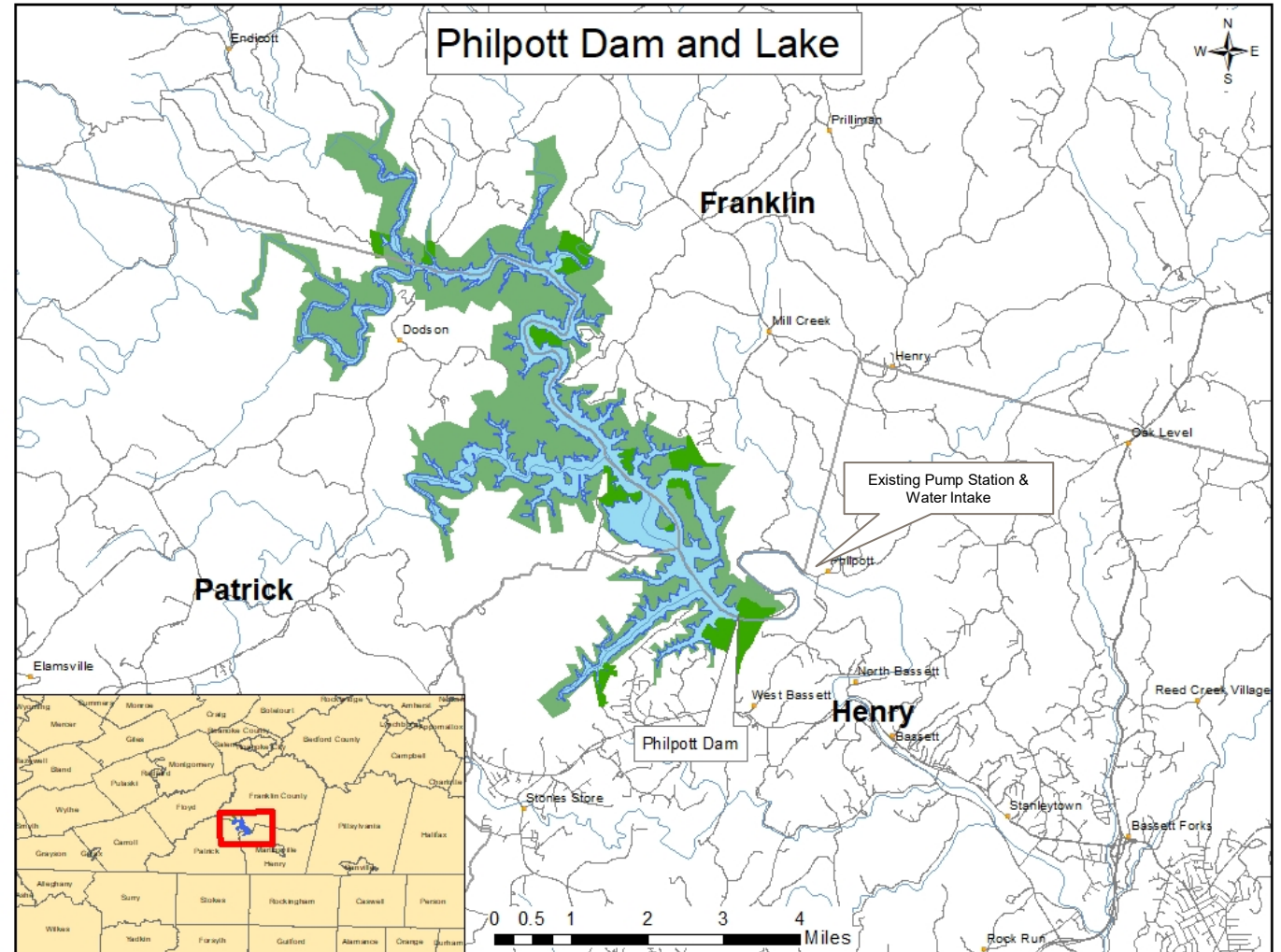
- Corps of Engineers received a request from Henry County Public Service Authority (HCP SA) seeking a water storage reallocation from Philpott Lake to support increased releases for additional downstream water supply withdrawals.
- Corps of Engineers will complete a feasibility study to determine the impacts of the reallocation to the authorized project purposes.
- Corps of Engineers is requesting public comments as part of the feasibility study process.



WHERE AND WHAT ARE WE STUDYING?



- Evaluate the feasibility of reallocating water storage within the reservoir at Philpott Lake or otherwise identify the most cost-effective means of providing additional water supply to the Henry County Public Service Authority to support future water demand needs.
- The feasibility study will determine the impact of this reallocation to the authorized project purposes and environment.

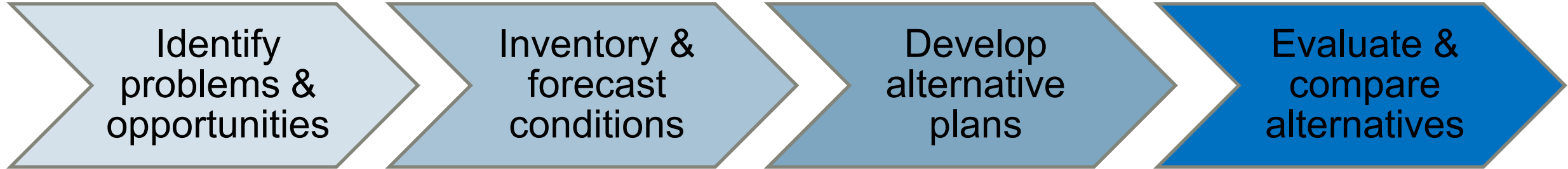




HOW ARE WE CONDUCTING THE STUDY?



Planning Process



- Information gathering
- *Public scoping session*

- Hydrologic & Hydraulic models
- Hydropower modeling
- Economic models
- Environmental conditions
- Current & future conditions

- *Identify & screen management measures*

- Economic impact
- Life safety
- Environmental quality

- Select a plan



HOW ARE WE CONDUCTING THE STUDY?



The feasibility report will focus on answering the following questions:

1. What is the water demand that will be considered in the study?
2. What is the most likely alternative to supply the requested demand without reallocation?
3. What amount of storage would be needed to reliably supply the requested demand?
4. How will the study assess impacts to other authorized project purposes?
5. Can the Corps accommodate the request without major structural or operational modifications to the project or seriously affecting other project purposes?
6. What would be the cost of the reallocated storage to the sponsor?
7. Should the Corps permanently reallocate storage at the project for water supply?
8. What are the environmental impacts of the water supply alternatives?



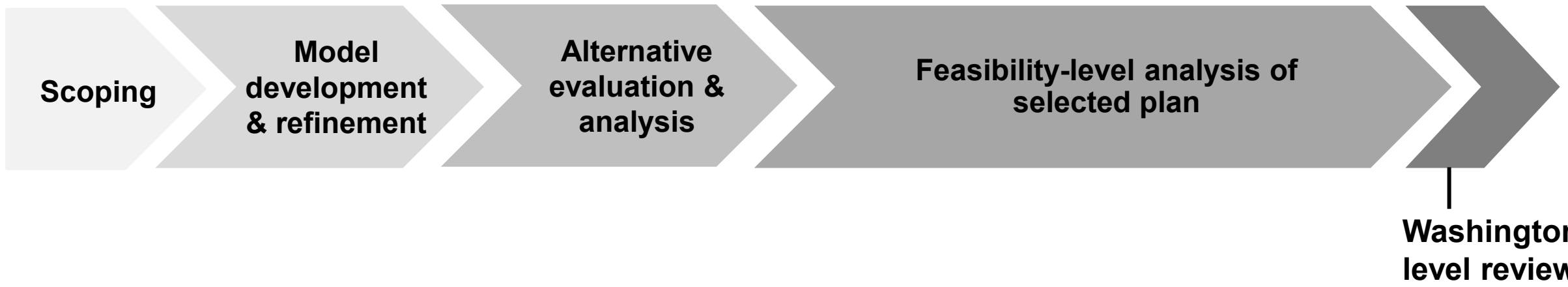
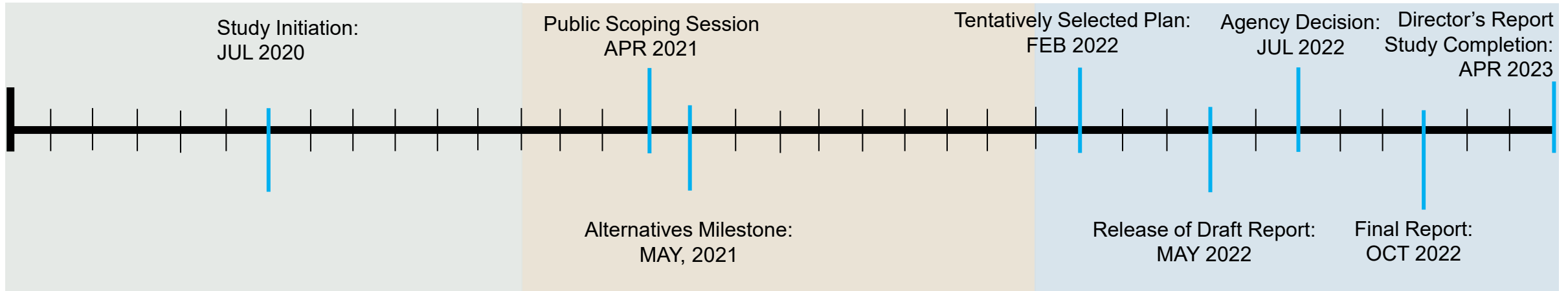
HOW CAN WE ADDRESS THE REQUEST?



- No-Action
- Use of Flood Control Storage
- Use of Hydropower Storage
- Use of Sediment Storage
- Construct New Reservoir
- Storage Tanks
- Groundwater
- Wholesale Purchase
- Pumped Aquifer Storage
- New Intake & Offline Storage
- Dredge Lake to Increase Volume
- Raise Dam to Increase Volume
- Change in Operational Procedures
- Interbasin Transfer
- Direct Withdrawal from New Intake
- Local River or Stream Surface Water
- Off Stream Raw Water Storage
- Convert Existing Quarry to Reservoir
- Nonstructural Measure 1 (added water conservation)
- Nonstructural Measure 2 (added water reuse)
- Combination of Measures



TENTATIVE SCHEDULE AND PLANNING PROCESS





HOW CAN YOU CONTRIBUTE?



We'd like for you to tell us:

- What concerns do you have with this study?
- What critical local resources do we need to be aware of to protect or avoid?
- What additional water supply measures do you think we should consider?
- What else should we know about?



HOW CAN YOU CONTRIBUTE?



- *Welcome to the Philpott Lake Reallocation Feasibility Study Public Scoping Session*
- *<https://www.facebook.com/usace.wilmington>*
- Submit questions via the chat function in FACEBOOK Livestream (must have a FACEBOOK account)
- Questions can also be submitted:
 - By Email: philpott-reallocation-feasibility-study@usace.army.mil
using the subject line “Philpott Reallocation Study – Scoping Comment”

- By mail:

U.S. Army Corps of Engineers, Wilmington District
c/o: Philpott Reallocation Project, ATTN: CESAW-PM-DJ
69 Darlington Ave
Wilmington, N.C. 28403